


Seifried
& Brew
LLC

HOUSEHOLD DATA**Summary table A. Household data, seasonally adjusted**

[Numbers in thousands]

Category	Oct. 2016	Aug. 2017	Sept. 2017	Oct. 2017	Change from: Sept. 2017- Oct. 2017
Employment status					
Civilian noninstitutional population.....	254,321	255,357	255,562	255,766	204
Civilian labor force.....	159,643	160,571	161,146	160,381	-765
Participation rate.....	62.8	62.9	63.1	62.7	-0.4
Employed.....	151,902	153,439	154,345	153,861	-484
Employment-population ratio.....	59.7	60.1	60.4	60.2	-0.2
Unemployed.....	7,740	7,132	6,801	6,520	-281
Unemployment rate.....	4.8	4.4	4.2	4.1	-0.1
Not in labor force.....	94,678	94,785	94,417	95,385	968

FRED  — Civilian Labor Force

Shaded areas indicate U.S. recessions

Source: U.S. Bureau of Labor Statistics

fred.stlouisfed.org

HOUSEHOLD DATA

Table A-15. Alternative measures of labor underutilization

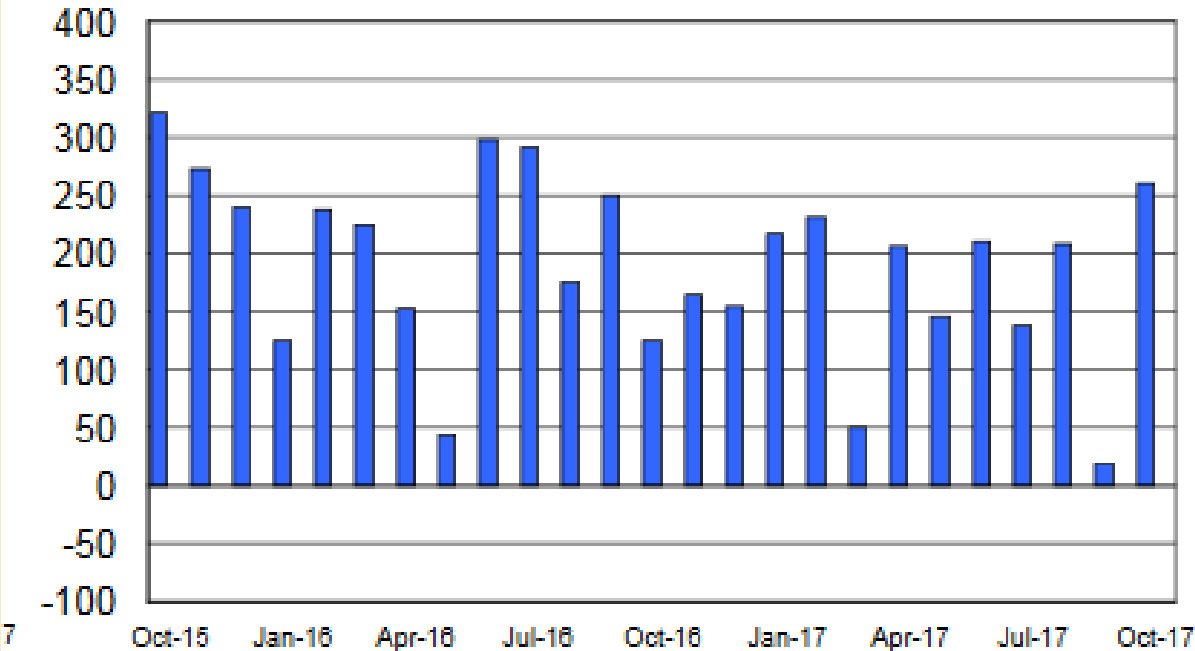
[Percent]

Measure	Not seasonally adjusted			Seasonally adjusted					
	Oct. 2016	Sept. 2017	Oct. 2017	Oct. 2016	June 2017	July 2017	Aug. 2017	Sept. 2017	Oct. 2017
U-1 Persons unemployed 15 weeks or longer, as a percent of the civilian labor force.....	1.9	1.6	1.5	2.0	1.6	1.7	1.7	1.7	1.5
U-2 Job losers and persons who completed temporary jobs, as a percent of the civilian labor force.....	2.1	1.9	1.8	2.3	2.2	2.1	2.2	2.1	2.0
U-3 Total unemployed, as a percent of the civilian labor force (official unemployment rate).....	4.7	4.1	3.9	4.8	4.4	4.3	4.4	4.2	4.1
U-4 Total unemployed plus discouraged workers, as a percent of the civilian labor force plus discouraged workers.....	5.0	4.3	4.2	5.1	4.7	4.7	4.7	4.5	4.4
U-5 Total unemployed, plus discouraged workers, plus all other persons marginally attached to the labor force, as a percent of the civilian labor force plus all persons marginally attached to the labor force.....	5.7	5.0	4.8	5.9	5.3	5.3	5.4	5.1	5.0
U-6 Total unemployed, plus all persons marginally attached to the labor force, plus total employed part time for economic reasons, as a percent of the civilian labor force plus all persons marginally attached to the labor force.....	9.2	8.0	7.6	9.5	8.6	8.6	8.6	8.3	7.9

NOTE: Persons marginally attached to the labor force are those who currently are neither working nor looking for work but indicate that they want and are available for a job and have looked for work sometime in the past 12 months. Discouraged workers, a subset of the marginally attached, have given a job-market related reason for not currently looking for work. Persons employed part time for economic reasons are those who want and are available for full-time work but have had to settle for a part-time schedule. Updated population controls are introduced annually with the release of January data.

Chart 2. Nonfarm payroll employment over-the-month change, seasonally adjusted, October 2015 – October 2017

Thousands



ESTABLISHMENT DATA

Summary table B. Establishment data, seasonally adjusted

Category	Oct. 2016	Aug. 2017	Sept. 2017 ^P	Oct. 2017 ^P
EMPLOYMENT BY SELECTED INDUSTRY (Over-the-month change, in thousands)				
Total nonfarm.....	124	208	18	261
Total private.....	132	184	15	252
Goods-producing.....	9	73	18	33
Mining and logging.....	-2	5	1	-2
Construction.....	16	24	11	11
Manufacturing.....	-5	44	6	24
Durable goods ¹	-1	34	7	19
Motor vehicles and parts.....	2.5	23.4	-2.5	3.4
Nondurable goods.....	-4	10	-1	5
Private service-providing.....	123	111	-3	219
Wholesale trade.....	3.7	5.1	9.1	5.7
Retail trade.....	-6.8	-2.4	6.7	-8.3
Transportation and warehousing.....	11.8	6.7	25.1	8.4
Utilities.....	0.3	-0.2	0.4	0.0
Information.....	-6	0	-3	-1
Financial activities.....	6	10	13	5
Professional and business services ¹	55	47	22	50
Temporary help services.....	12.6	8.7	7.8	18.3
Education and health services ¹	45	46	22	41
Health care and social assistance.....	41.6	19.3	7.8	33.5
Leisure and hospitality.....	11	-9	-102	106
Other services.....	3	8	3	12
Government.....	-8	24	3	9

ESTABLISHMENT DATA
Summary table B. Establishment data, seasonally adjusted

Category	Oct. 2016	Aug. 2017	Sept. 2017 ^P	Oct. 2017 ^P
HOURS AND EARNINGS				
ALL EMPLOYEES				
Total private				
Average weekly hours.....	34.4	34.4	34.4	34.4
Average hourly earnings.....	\$25.90	\$26.42	\$26.54	\$26.53
Average weekly earnings.....	\$890.96	\$908.85	\$912.98	\$912.63
Index of aggregate weekly hours (2007=100) ³	105.9	107.4	107.4	107.6
Over-the-month percent change.....	0.1	0.2	0.0	0.2
Index of aggregate weekly payrolls (2007=100) ⁴	131.2	135.6	136.3	136.5
Over-the-month percent change.....	0.5	0.2	0.5	0.1

Seifried
& Brew
LLC