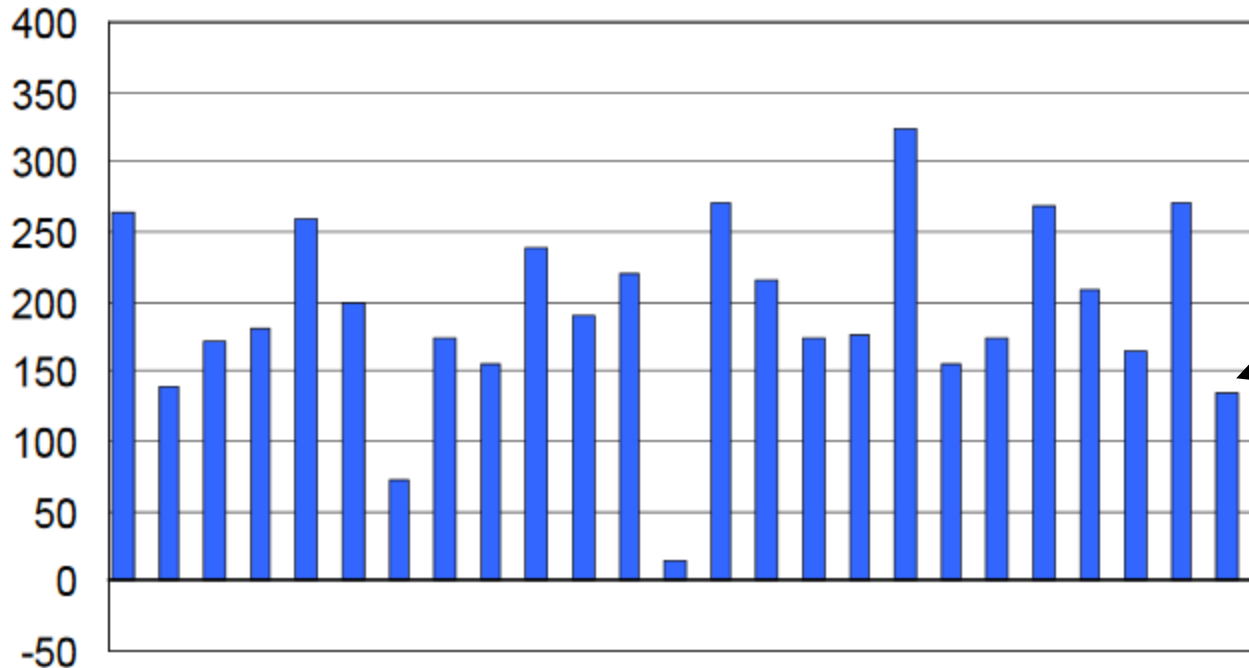


Seifried
& Brew
LLC

Chart 2. Nonfarm payroll employment over-the-month change, seasonally adjusted, September 2016 – September 2018

Thousands



121,000

Sep-16 Dec-16 Mar-17 Jun-17 Sep-17 Dec-17 Mar-18 Jun-18 Sep-18

ESTABLISHMENT DATA

Summary table B. Establishment data, seasonally adjusted

Category	Sept. 2017	July 2018	Aug. 2018 ^P	Sept. 2018 ^P
EMPLOYMENT BY SELECTED INDUSTRY				
(Over-the-month change, in thousands)				
Total nonfarm.....	14	165	270	134
Total private.....	16	137	254	121
Goods-producing.....	15	41	37	46
Mining and logging.....	0	0	6	5
Construction.....	9	19	26	23
Manufacturing.....	6	22	5	18
Durable goods ¹	5	21	5	17
Motor vehicles and parts.....	-2.4	-1.0	1.6	-0.4
Nondurable goods.....	1	1	0	1
Private service-providing.....	1	96	217	75
Wholesale trade.....	7.6	10.3	21.3	4.4
Retail trade.....	1.8	2.0	11.5	-20.0
Transportation and warehousing.....	25.4	8.2	21.3	23.8
Utilities.....	0.4	-3.0	0.6	0.1
Information.....	-8	1	-3	0
Financial activities.....	8	3	12	13
Professional and business services ¹	27	39	65	54
Temporary help services.....	10.5	10.3	12.4	10.6
Education and health services ¹	14	36	58	18
Health care and social assistance.....	10.2	33.0	42.4	29.8
Leisure and hospitality.....	-75	13	21	-17
Other services.....	0	-13	9	-1
Government.....	-2	28	16	13

ESTABLISHMENT DATA**Summary table B. Establishment data, seasonally adjusted**

Category	Sept. 2017	July 2018	Aug. 2018 ^P	Sept. 2018 ^P
HOURS AND EARNINGS ALL EMPLOYEES				
Total private				
Average weekly hours.....	34.3	34.5	34.5	34.5
Average hourly earnings.....	\$26.51	\$27.07	\$27.16	\$27.24
Average weekly earnings.....	\$909.29	\$933.92	\$937.02	\$939.78
Index of aggregate weekly hours (2007=100) ³	107.3	109.7	110.0	110.1
Over-the-month percent change.....	-0.3	-0.2	0.3	0.1
Index of aggregate weekly payrolls (2007=100) ⁴	136.0	142.0	142.8	143.3
Over-the-month percent change.....	0.2	0.1	0.6	0.4

YOY change in hourly earnings = 2.8%

HOUSEHOLD DATA**Table A-15. Alternative measures of labor underutilization**

[Percent]

Measure	Not seasonally adjusted			Seasonally adjusted					
	Sept. 2017	Aug. 2018	Sept. 2018	Sept. 2017	May 2018	June 2018	July 2018	Aug. 2018	Sept. 2018
U-1 Persons unemployed 15 weeks or longer, as a percent of the civilian labor force.....	1.6	1.3	1.3	1.7	1.3	1.4	1.5	1.4	1.4
U-2 Job losers and persons who completed temporary jobs, as a percent of the civilian labor force.....	1.9	1.8	1.5	2.1	1.8	1.9	1.9	1.8	1.7
U-3 Total unemployed, as a percent of the civilian labor force (official unemployment rate).....	4.1	3.9	3.6	4.2	3.8	4.0	3.9	3.9	3.7
U-4 Total unemployed plus discouraged workers, as a percent of the civilian labor force plus discouraged workers.....	4.3	4.2	3.8	4.4	4.0	4.3	4.2	4.1	3.9
U-5 Total unemployed, plus discouraged workers, plus all other persons marginally attached to the labor force, as a percent of the civilian labor force plus all persons marginally attached to the labor force.....	5.0	4.8	4.5	5.1	4.6	4.9	4.8	4.7	4.6
U-6 Total unemployed, plus all persons marginally attached to the labor force, plus total employed part time for economic reasons, as a percent of the civilian labor force plus all persons marginally attached to the labor force.....	8.0	7.4	7.1	8.3	7.6	7.8	7.5	7.4	7.5

Index	Non-Manufacturing						Manufacturing		
	Series Index Sep	Series Index Aug	Percent Point Change	Direction	Rate of Change	Trend** (Months)	Series Index Sep	Series Index Aug	Percent Point Change
NMI®/ PMI®	61.6	58.5	3.1	Growing	Faster	104	59.8	61.3	-1.5
Business Activity/ Production	65.2	60.7	4.5	Growing	Faster	110	63.9	63.3	0.6
New Orders	61.6	60.4	1.2	Growing	Faster	92	61.8	65.1	-3.3
Employment	62.4	56.7	5.7	Growing	Faster	55	58.8	58.5	0.3
Supplier Deliveries	57	56	1	Slowing	Faster	33	61.1	64.5	-3.4
Inventories	54.5	53.5	1	Growing	Faster	8	53.3	55.4	-2.1
Prices	64.2	62.8	1.4	Increasing	Faster	31	66.9	72.1	-5.2
Backlog of Orders	58.5	56.5	2	Growing	Faster	9	55.7	57.5	-1.8
New Export Orders	61	60.5	0.5	Growing	Faster	20	56	55.2	0.8
Imports	55	52	3	Growing	Faster	7	54.5	53.9	0.6
Inventory Sentiment	59.5	59.5	0	Too High	Same	256	N/A	N/A	N/A
Customers' Inventories	N/A	N/A	N/A	N/A	N/A	N/A	40.5	41	-0.5
Overall Economy				Growing	Faster	109			
Non-Manufacturing Sector				Growing	Faster	104			

Non-Manufacturing ISM® *Report On Business*® data is seasonally adjusted for the Business Activity, New Orders, Prices and Employment Indexes. Manufacturing ISM® *Report On Business*® data is seasonally adjusted for New Orders, Production, Employment and Supplier Deliveries Indexes.

*Number of months moving in current direction.

Seifried
& Brew
LLC